

Sleepy Hollow

ANDOVER FABRICS



Tarrytown Quilt designed
by: **Janet Houts**
Quilt Size: **58" x 70"**
Skill Level: **Advanced Beginner**
andoverfabrics.com

About Sleepy Hollow

Sleepy Hollow is a perfect assortment of small-scale prints perfect for Halloween and Fall projects. Look closely for tiny bats and brooms and crescent moons — all in candy-corn colors!

andover

•
•
• makower.uk
•

Free Pattern Download Available

1384 Broadway New York, NY 10018
Tel. (800) 223-5678 • andoverfabrics.com

Tarrytown Quilt



Introducing Andover Fabrics new collection: **SLEEPY HOLLOW** by Andover Fabrics

Quilt designed by Janet Houts

Traditional Log Cabin (L.C.) blocks alternate with Pinwheel blocks in this graphic nap quilt. Clever placement of light and dark fabrics keeps the viewer's attention moving in diagonal directions. The rusty oranges, grays and blacks with fun novelty prints conjure up cool autumn days and spooky nights.

Cutting Directions

Note: Read assembly directions before cutting patches. All measurements are cut sizes and include 1/4" seam allowances. A fat 1/8 is a 9" x 20"-22" cut of fabric. A fat 1/4 is an 18" x 20"-22" cut. Borders are cut the exact lengths required plus 1/4" seam allowances. WOF designates the width of fabric from selvedge to selvedge (approximately 42" wide).

- Fabric A** Cut (10) squares 3 1/2" x 3 1/2" for L.C. centers
- Fabric B** Cut (20) squares 6 7/8" x 6 7/8", cut in half diagonally to make 40 half-square triangles
- Fabric C** Cut (10) strips 2" x 12 1/2"
Cut (10) strips 2" x 11"
- Fabric D** Cut (20) squares 3 7/8" x 3 7/8", cut in half diagonally to make 40 half-square triangles
- Fabric E** Cut (10) strips 2" x 5"
Cut (10) strips 2" x 3 1/2"
- Fabric F** Cut (10) strips 2" x 6 1/2"
Cut (10) strips 2" x 5"
- Fabric G** Cut (6) strips 1 1/2" x WOF, pieced to make the following:
(2) side borders 1 1/2" x 60 1/2"
(2) top/bottom borders 1 1/2" x 50 1/2"
- Fabric H** Cut (2) side borders 4 1/2" x 62 1/2", cut lengthwise
Cut (2) t/borders 4 1/2" x 58 1/2", cut lengthwise
- Fabric I** Cut (10) strips 2" x 8"
Cut (10) strips 2" x 6 1/2"
- Fabric J** Cut (10) strips 2" x 9 1/2"
Cut (10) strips 2" x 8"
- Fabric K** Cut (10) strips 2" x 11"
Cut (10) strips 2" x 9 1/2"
- Fabric L** Cut (7) strips 2 1/2" x WOF for binding
- Fabric M** Cut (60) squares 3 7/8" x 3 7/8", cut in half diagonally to make 120 half-square triangles
- Backing** Cut (2) panels 39" x 66", pieced to fit quilt top with overlap on all sides

Quilt finishes 58" x 70"

10 Log Cabin Blocks: 12" x 12"

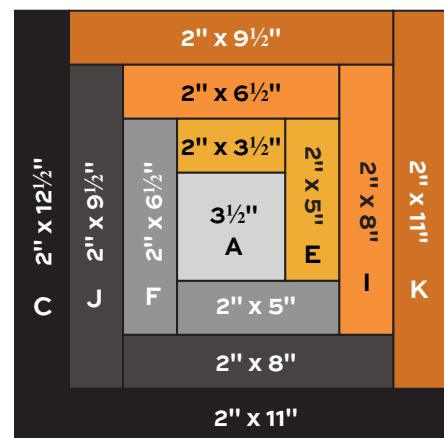
10 Pinwheel Blocks: 12" x 12"

Fabric Requirements

		Yardage	Fabric
Fabric A	L.C.	fat 1/8 yard	9486-L
Fabric B	Pinwheel	1 yard	9486-O
Fabric C	L.C.	3/8 yard	9487-K
Fabric D	Pinwheel	fat 1/4 yard	9488-K
Fabric E	L.C.	fat 1/4 yard	9488-O
Fabric F	L.C.	fat 1/4 yard	9489-C
Fabric G	border	3/8 yard	9489-L
Fabric H	border	2 yards	9490-K
Fabric I	L.C.	fat 1/4 yard	9490-O
Fabric J	L.C.	3/8 yard	9491-K
Fabric K	L.C.	3/8 yard	9491-O
Fabric L	binding	5/8 yard	9492-K
Fabric M	Pinwheel	3/4 yard	9492-L
Backing		3 3/4 yards	9487-L

Making the Quilt

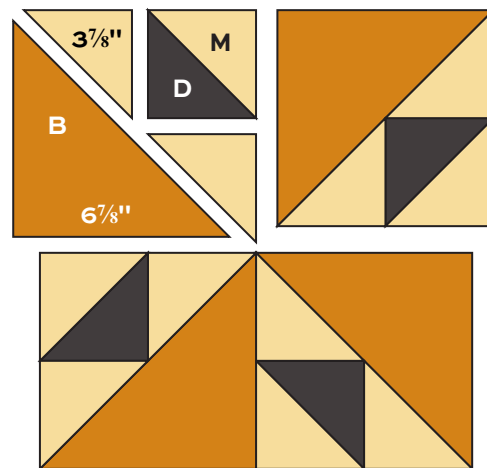
- Referring to the Log Cabin Block diagram, sew 2"-wide strips clockwise to a Fabric A 3 1/2" square in the order shown to make a block. Make 10 Log Cabin blocks alike.



Log Cabin Block – Make 10

Tarrytown Quilt

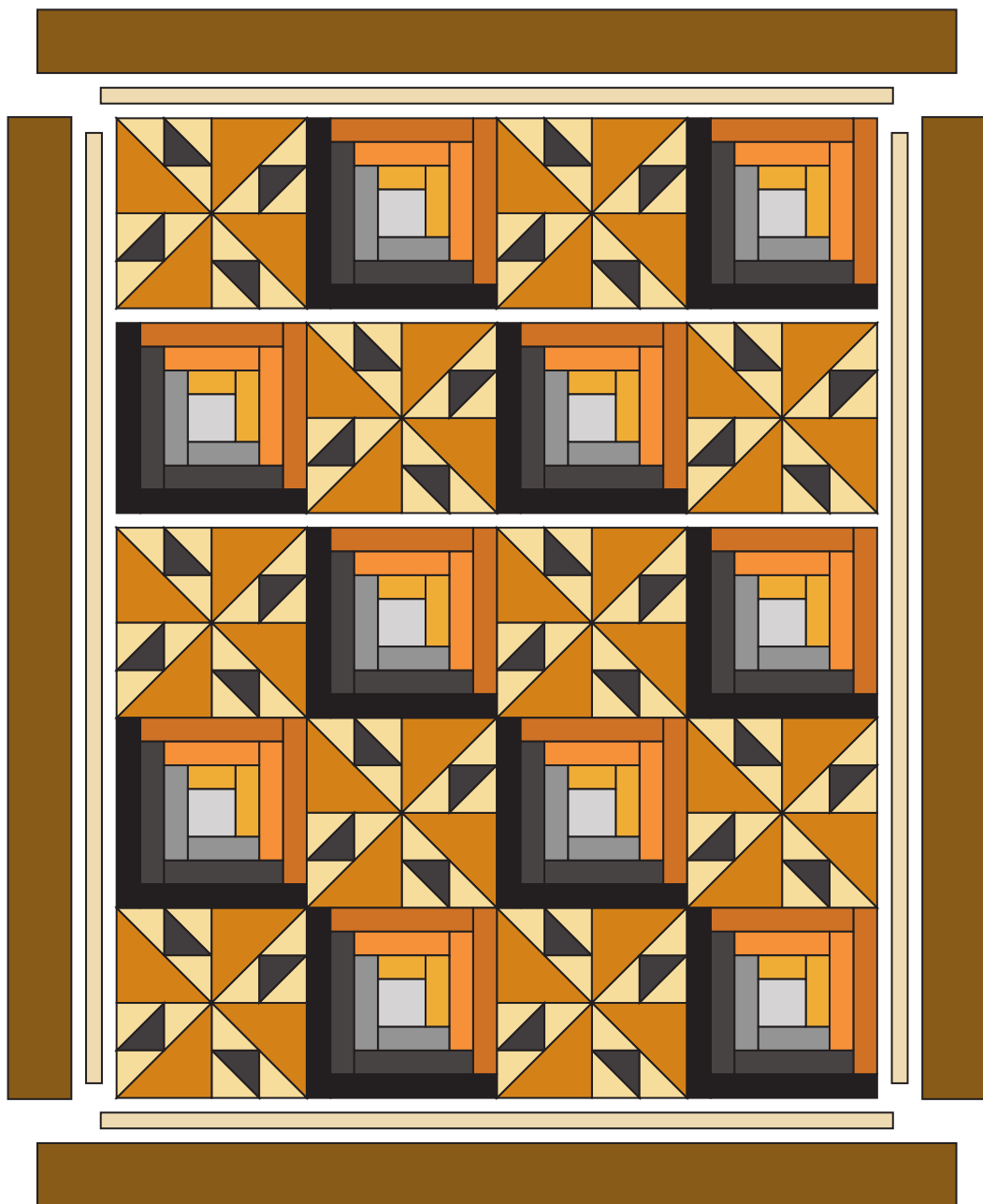
2. Referring to the Pinwheel Block diagram, join a D and an M triangle to make a pieced square. Sew 2 M triangles to sides of the D patch. Make 4 units like this. Join units with Fabric B triangles to make the 4 parts of a block. Join the 4 parts to make a Pinwheel block. Make 10 blocks like this.
3. Arrange the blocks on a flat surface or design wall in the order shown, noting carefully the orientation of the Log Cabin blocks. Once you are satisfied with the placement, join the blocks in 5 horizontal rows, and then join the rows.
4. Sew narrow borders to the quilt, sides on first. Join wide borders to the quilt, sides on first.



Pinwheel Block – Make 10

Finishing the Quilt

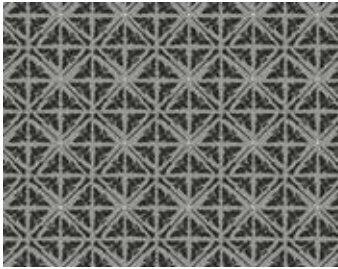
5. Layer the quilt with batting and backing and baste. Quilt in the ditch around borders and block patches. Or if you prefer, quilt an overall design across the quilt. Bind to finish the quilt.



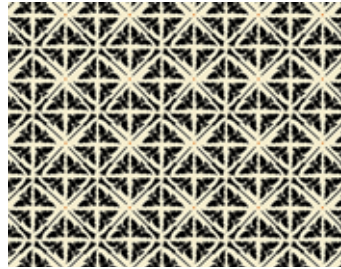
Quilt Diagram

Sleepy Hollow

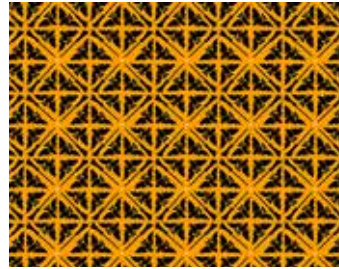
ANDOVER FABRICS



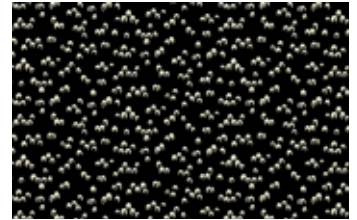
9486-K



9486-L*



9486-O*



9491-K*



9487-K*



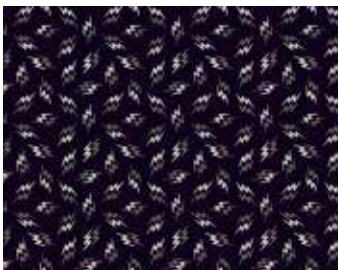
9487-L*



9487-O



9491-L



9488-K*



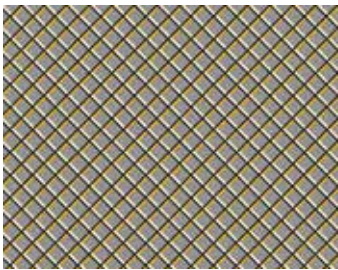
9488-L



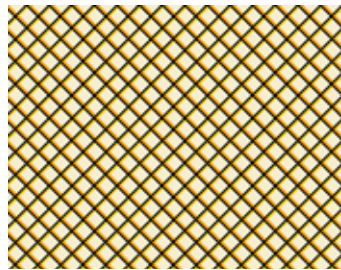
9488-O*



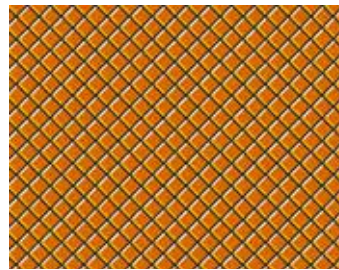
9491-O*



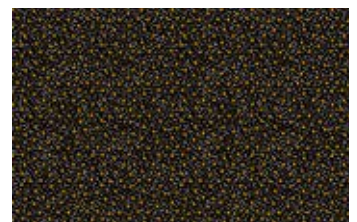
9489-C*



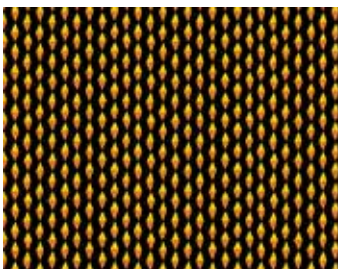
9489-L*



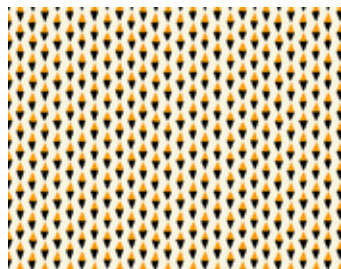
9489-O



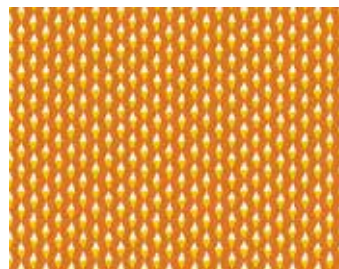
9492-K*



9490-K*



9490-L



9490-O*



9492-L*



9492-O

All fabrics are used in quilt pattern. Fabrics shown are 25% of actual size.

andover : makower.uk

Free Pattern Download Available

1384 Broadway New York, NY 10018
Tel. (800) 223-5678 • andoverfabrics.com